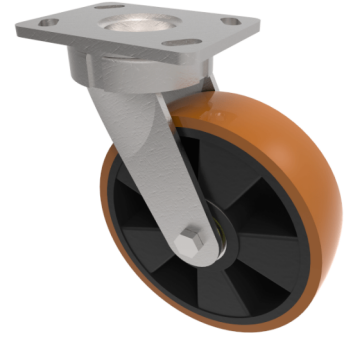


Polyurethane Nylon Plate Swivel Castor 100mm 300kg Load

Product code: BZK100XPNB



Fabricated swivel castor with a top plate fixing with a polyurethane tyred on nylon centred wheel with ball bearings. Wheel diameter 100mm, tread width 40mm, overall height 150mm, plate size 150mm x 110mm, hole centres 105mm x 80mm or 121mm x 59mm. Load capacity 300kg.

Diameter (mm)	100
Fixing Option	Plate
Castor Type	Swivel
Bearing Type	Ball
Height (mm)	150
Plate Size (mm)	150 x 110
Hole Centres (mm)	105/121 x 80/59
To Suit Fixing Bolt (mm)	12
Wheel Material	Polyurethane on Nylon
Colour / Shore Hardness	Brown Polyurethane on Nylon Rim / 96 Shore A
Temperature Resistance	-20 °C TO +80 °C
Top Plate Thickness (mm)	7.5
Fork Thickness (mm)	6
Swivel Radius (mm)	93
Load Capacity (kg)	300
Tread (mm)	40