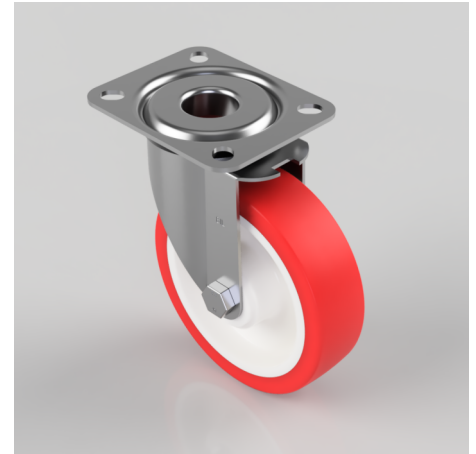


## Polyurethane Nylon Plate Swivel Castor 125mm 200kg Load

**Product code: BZMM125NP**

Pressed steel swivel castor with top plate fixing fitted with a red polyurethane tyre white nylon centred wheel with a plain bore. Wheel diameter 125mm, tread width 34mm, overall height 155mm, top plate 105mm x 85mm, hole centres 80mm x 60mm. Load capacity 200kg.



Diameter (mm)	125
Castor Type	Swivel
Fixing Option	Plate
Height (mm)	155
Wheel Material	Polyurethane on Nylon
Colour / Shore Hardness	Red Polyurethane on Nylon Rim / 96 Shore A
Temperature Resistance	-20 °C TO +70 °C
Bearing Type	Plain
Load Capacity (kg)	200
Tread (mm)	34
Swivel Radius (mm)	95
Plate Size (mm)	105 X 85
Hole Centres (mm)	80 X 60
Top Plate Thickness (mm)	2.5
Fork Thickness (mm)	2
To Suit Fixing Bolt (mm)	8