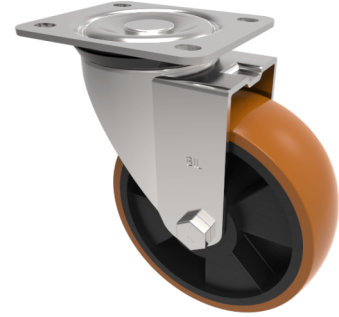


## Polyurethane Nylon Plate Swivel Castor 125mm 300kg Load

**Product code: BZEH125XPNBLP**



Pressed steel swivel castor with a top plate fixing fitted with a brown polyurethane tyre on black nylon centred wheel with roller bearings, Wheel diameter 125mm, tread width 45mm, overall height 156mm, top plate 135mm x 110mm, hole centres 105mm x 80mm or 116mm x 63.5mm. Load capacity 300kg

Diameter (mm)	125
Castor Type	Swivel
Fixing Option	Plate
Height (mm)	155
Wheel Material	Polyurethane on Nylon
Colour / Shore Hardness	Brown Polyurethane on Nylon Rim / 96 Shore A
Temperature Resistance	-20 °C TO +60 °C
Bearing Type	Roller
Load Capacity (kg)	300
Tread (mm)	45
Swivel Radius (mm)	104
Plate Size (mm)	135 x 110
Hole Centres (mm)	105/116 x 80/64
Top Plate Thickness (mm)	3
Fork Thickness (mm)	3
To Suit Fixing Bolt (mm)	10

### BIL GROUP LTD

Porte Marsh Road, Calne, Wiltshire, SN11 9BW

Registered in England No: 2603821

VAT Reg: GB572705729

