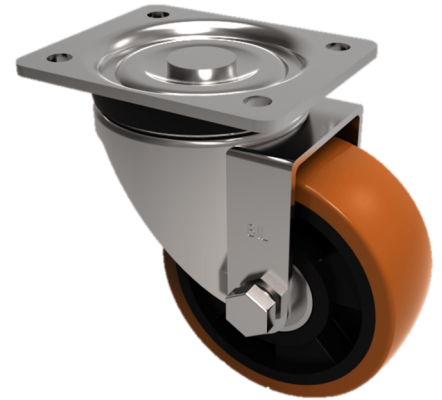


Polyurethane Nylon Plate Swivel Castor 125mm 400kg Load

Product code: BZH125XPNB

Pressed steel swivel castor with a top plate fixing fitted with a brown polyurethane tyre on black nylon centred wheel with roller bearings, Wheel diameter 125mm, tread width 45mm, overall height 155mm, top plate 105mm x 86mm, hole centres 80mm x 60mm. Load capacity 400kg



| | |
|--------------------------|--|
| Diameter (mm) | 125 |
| Castor Type | Swivel |
| Fixing Option | Plate |
| Height (mm) | 155 |
| Wheel Material | Polyurethane on Nylon |
| Colour / Shore Hardness | Brown Polyurethane on Nylon Rim / 96 Shore A |
| Temperature Resistance | -20 °C TO +60 °C |
| Bearing Type | Roller |
| Load Capacity (kg) | 400 |
| Tread (mm) | 45 |
| Swivel Radius (mm) | 104 |
| Plate Size (mm) | 105 x 86 |
| Hole Centres (mm) | 80 X 60 |
| Top Plate Thickness (mm) | 4 |
| Fork Thickness (mm) | 4 |
| To Suit Fixing Bolt (mm) | 8 |

BIL GROUP LTD

Porte Marsh Road, Calne, Wiltshire, SN11 9BW

Registered in England No: 2603821

VAT Reg: GB572705729

