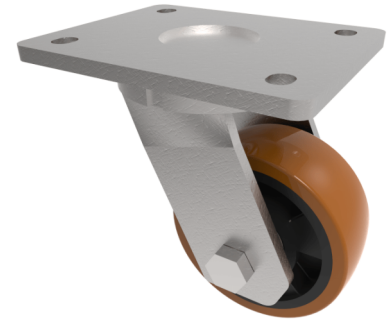


## Polyurethane Nylon Plate Swivel Castor 125mm 400kg Load

**Product code: BZMJ125XPNB**

Fabricated steel swivel castor with a top plate fixing fitted with a brown polyurethane tyred on nylon centred wheel with a ball bearing. Wheel diameter 125mm, tread width 45mm, overall height 165mm, plate size 138mm x 110mm, hole centres 105mm x 80mm. Load capacity 400kg.



Diameter (mm)	125
Fixing Option	Plate
Castor Type	Swivel
Bearing Type	Ball
Height (mm)	165
Plate Size (mm)	138 x 110
Hole Centres (mm)	105 x 80/75
To Suit Fixing Bolt (mm)	10
Wheel Material	Polyurethane on Nylon
Colour / Shore Hardness	Brown Polyurethane on Nylon Rim / 96 Shore A
Temperature Resistance	-20 °C TO +80 °C
Top Plate Thickness (mm)	7
Fork Thickness (mm)	6
Swivel Radius (mm)	101
Load Capacity (kg)	400
Tread (mm)	45