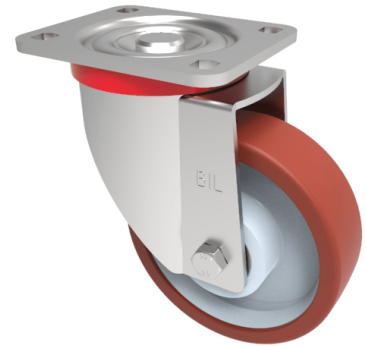


Polyurethane Nylon Plate Swivel Castor 125mm 500kg Load

Product code: BZP125PNB

Pressed steel swivel castor with a top plate fixing fitted with a brown polyurethane on white nylon wheel with a ball bearing, fitted with a swivel. Wheel diameter 125mm, tread width 45mm, overall height 164mm, plate size 135mm x 110mm, hole centres 105mm x 80mm. Load capacity 500kg.



Diameter (mm)	125
Castor Type	Swivel
Fixing Option	Plate
Height (mm)	164
Wheel Material	Polyurethane on Nylon
Colour / Shore Hardness	Brown Polyurethane on Nylon Rim / 96 Shore A
Temperature Resistance	-20 °C TO +60 °C
Bearing Type	Roller
Load Capacity (kg)	500
Tread (mm)	45
Swivel Radius (mm)	118
Plate Size (mm)	135 x 110
Hole Centres (mm)	105 x 80
Top Plate Thickness (mm)	6
Fork Thickness (mm)	4
To Suit Fixing Bolt (mm)	12

BIL GROUP LTD

Porte Marsh Road, Calne, Wiltshire, SN11 9BW

Registered in England No: 2603821

VAT Reg: GB572705729

