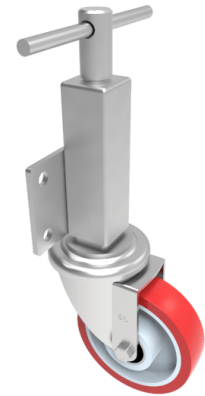


Polyurethane Nylon Plate Swivel Castor 150mm 250kg Load

Product code: JAZ150NPBJ

Zinc plated box jacking unit with side fitting plate and a 75mm lift fitted with a 150mm white zinc plated swivel pressed steel castor with a red polyurethane tyred white nylon centred wheel with ball bearing bore with a load capacity of 250kg Please note Jacking castors are rated on a different principal to other castors and we recommend the total lifted load is divided over just 2 jacking units.1 extra safety point is when jacked up please beware of any obstacles as a sudden shock could result in the inner square tube bending around the outer tube. Please refer to the BIL catalogue or request a drawing



Diameter (mm)	150
Castor Height (mm)	188
Castor Type	Swivel
Swivel Radius (mm)	128
Fixing Option	Plate
Bearing Type	Ball
To Suit Fixing Bolt (mm)	14
Wheel Material	Polyurethane on Nylon
Colour / Shore Hardness	Red Polyurethane on Nylon Rim / 96 Shore A
Temperature Resistance	-20 °C TO +70 °C
Load Capacity (kg)	250
Tread (mm)	40
Height (mm)	426 / 501
Lifting Stroke (mm)	75