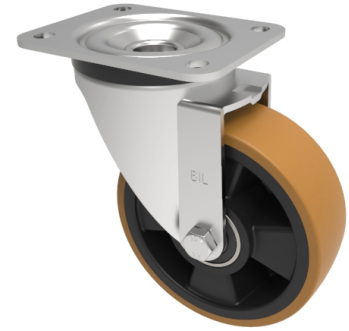


Polyurethane Nylon Plate Swivel Castor 150mm 500kg Load

Product code: BZPH150XPNB



Pressed steel swivel castor with a top plate fixing fitted with a brown polyurethane tyred black nylon centred wheel with ball bearings. Wheel diameter 150mm, tread width 50mm, overall height 188mm, top plate 135mm x 110mm, hole centres 105mm x 80mm. Load capacity 500kg.

Diameter (mm)	150
Castor Type	Swivel
Fixing Option	Plate
Height (mm)	190
Wheel Material	Polyurethane on Nylon
Colour / Shore Hardness	Brown Polyurethane on Nylon Rim / 96 Shore A
Temperature Resistance	-20 °C TO +60 °C
Bearing Type	Ball
Load Capacity (kg)	500
Tread (mm)	50
Swivel Radius (mm)	128
Plate Size (mm)	135 x 110
Hole Centres (mm)	105 x 80/75
Top Plate Thickness (mm)	4
Fork Thickness (mm)	4
To Suit Fixing Bolt (mm)	10

BIL GROUP LTD

Porte Marsh Road, Calne, Wiltshire, SN11 9BW

Registered in England No: 2603821

VAT Reg: GB572705729

