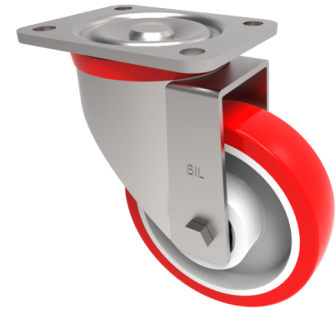


## Polyurethane Nylon Plate Swivel Castor 150mm 500kg Load

**Product code: BZP150NPBJ**



Pressed steel swivel castor with a top plate fixing fitted with a red polyurethane treaded white nylon centred wheel with ball bearings. Wheel diameter 150mm, tread width 40mm, overall height 194mm, top plate 135mm x 110mm, hole centres 105mm x 80mm. Load capacity 500kg.

Diameter (mm)	150
Castor Type	Swivel
Fixing Option	Plate
Height (mm)	194
Wheel Material	Polyurethane on Nylon
Colour / Shore Hardness	Red Polyurethane on Nylon Rim / 96 Shore A
Temperature Resistance	-20 °C TO +70 °C
Bearing Type	Ball
Load Capacity (kg)	500
Tread (mm)	40
Swivel Radius (mm)	130
Plate Size (mm)	135 x 110
Hole Centres (mm)	105 x 80
Top Plate Thickness (mm)	6
Fork Thickness (mm)	4
To Suit Fixing Bolt (mm)	12