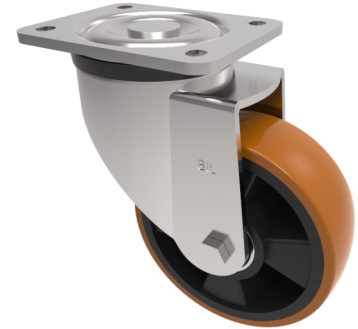


## Polyurethane Nylon Plate Swivel Castor 150mm 600kg Load

**Product code: BZXP150XPNB**



Pressed steel swivel castor with a flat plate fixing fitted with a brown polyurethane tyred on black nylon centred wheel with ball bearings. Wheel diameter 150mm, tread width 50mm, overall height 200mm, plate size 135mm x 110mm, hole centres 105mm x 80/75mm. Load capacity 600kg.

Diameter (mm)	150
Castor Type	Swivel
Fixing Option	Plate
Height (mm)	200
Wheel Material	Polyurethane on Nylon
Colour / Shore Hardness	Brown Polyurethane on Nylon Rim / 96 Shore A
Temperature Resistance	-20 °C TO +60 °C
Bearing Type	Ball
Load Capacity (kg)	600
Tread (mm)	50
Swivel Radius (mm)	140
Plate Size (mm)	135 x 110
Hole Centres (mm)	105 x 80/75
Top Plate Thickness (mm)	6
Fork Thickness (mm)	5
To Suit Fixing Bolt (mm)	10