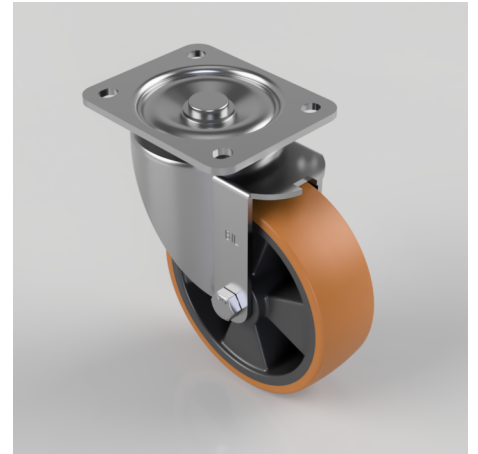


Polyurethane Nylon Plate Swivel Castor 150mm 600kg Load

Product code: BZSPH150XPNB

Pressed steel swivel castor with a top plate fixing fitted with a brown polyurethane tyre black nylon centred wheel with roller bearings. Wheel diameter 150mm, tread width 50mm, overall height 190mm, top plate 135mm x 110mm, hole centres 105mm x 80/75mm. Load capacity 600kg.



Diameter (mm)	150
Castor Type	Swivel
Fixing Option	Plate
Height (mm)	190
Wheel Material	Polyurethane on Nylon
Colour / Shore Hardness	Brown Polyurethane on Nylon Rim / 96 Shore A
Temperature Resistance	-20 °C TO +60 °C
Bearing Type	Roller
Load Capacity (kg)	600
Tread (mm)	50
Swivel Radius (mm)	128
Plate Size (mm)	135 x 110
Hole Centres (mm)	105 x 80/75
Top Plate Thickness (mm)	5
Fork Thickness (mm)	4
To Suit Fixing Bolt (mm)	10