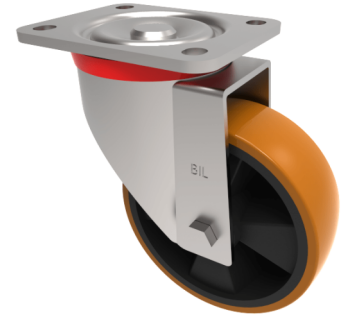


## Polyurethane Nylon Plate Swivel Castor 150mm 600kg Load

**Product code: BZP150XPNB**



Pressed steel swivel castor with a flat plate fixing fitted with a brown polyurethane tyred on black nylon centred wheel with roller bearings. Wheel diameter 150mm, tread width 50mm, overall height 197mm, plate size 135mm x 100mm, hole centres 105mm x 80mm. Load capacity 600kg.

|                          |  |
|--------------------------|--|
| Diameter (mm)            | 150  |
| Castor Type              | Swivel                                       |
| Fixing Option            | Plate  |
| Height (mm)              | 194  |
| Wheel Material           | Polyurethane on Nylon                        |
| Colour / Shore Hardness  | Brown Polyurethane on Nylon Rim / 96 Shore A |
| Temperature Resistance   | -20 °C TO +60 °C                             |
| Bearing Type             | Roller                                       |
| Load Capacity (kg)       | 600  |
| Tread (mm)               | 50   |
| Swivel Radius (mm)       | 130  |
| Plate Size (mm)          | 135 x 110                                    |
| Hole Centres (mm)        | 105 x 80                                     |
| Top Plate Thickness (mm) | 6  |
| Fork Thickness (mm)      | 4  |
| To Suit Fixing Bolt (mm) | 12   |

### BIL GROUP LTD

Porte Marsh Road, Calne, Wiltshire, SN11 9BW

Registered in England No: 2603821

VAT Reg: GB572705729

