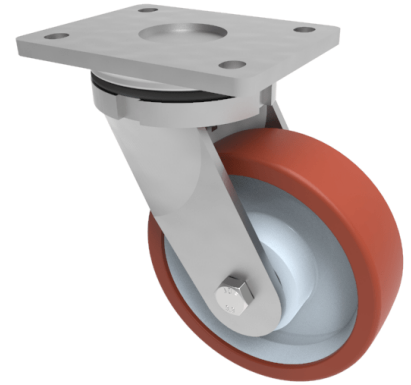


## Polyurethane Nylon Plate Swivel Castor 150mm 600kg Load

**Product code: BZSAB150PNBJ**

Fabricated zinc plated swivel castor with plate fixing fitted with a brown polyurethane tyre white nylon centred wheel with ball bearings. Wheel diameter 150mm, tread width 45mm, overall height 200mm, plate size 138mm x 110mm, hole centres 105mm x 80mm/75mm. Load capacity 600kg,



|                          |  |
|--------------------------|--|
| Diameter (mm)            | 150  |
| Fixing Option            | Plate  |
| Castor Type              | Swivel                                       |
| Bearing Type             | Ball   |
| Height (mm)              | 200  |
| Plate Size (mm)          | 138 x 110                                    |
| Hole Centres (mm)        | 105 x 80                                     |
| To Suit Fixing Bolt (mm) | 10   |
| Wheel Material           | Polyurethane on Nylon                        |
| Colour / Shore Hardness  | Brown Polyurethane on Nylon Rim / 96 Shore A |
| Temperature Resistance   | -20 °C TO +60 °C                             |
| Top Plate Thickness (mm) | 8  |
| Fork Thickness (mm)      | 6  |
| Swivel Radius (mm)       | 130  |
| Load Capacity (kg)       | 600  |
| Tread (mm)               | 45   |

### BIL GROUP LTD

Porte Marsh Road, Calne, Wiltshire, SN11 9BW

Registered in England No: 2603821

VAT Reg: GB572705729

