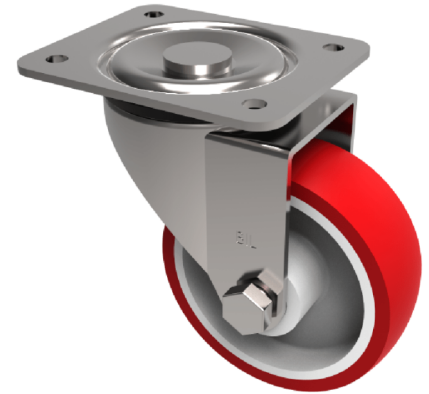


Polyurethane Nylon Plate Swivel Castor 160mm 400kg Load

Product code: BZPH160PNB

Pressed steel swivel castor with a top plate fixing fitted with a brown polyurethane tyre on white nylon centre wheel with roller bearings. Wheel diameter 160mm, tread width 40mm, overall height 193mm, top plate 135mm x 110mm, hole centres 105mm x 80/75mm. Load capacity 400kg.



| | |
|--------------------------|--|
| Diameter (mm) | 160 |
| Castor Type | Swivel |
| Fixing Option | Plate |
| Height (mm) | 190 |
| Wheel Material | Polyurethane on Nylon |
| Colour / Shore Hardness | Brown Polyurethane on Nylon Rim / 96 Shore A |
| Temperature Resistance | -20 °C TO +60 °C |
| Bearing Type | Roller |
| Load Capacity (kg) | 400 |
| Tread (mm) | 40 |
| Swivel Radius (mm) | 133 |
| Plate Size (mm) | 135 x 110 |
| Hole Centres (mm) | 105 x 80/75 |
| Top Plate Thickness (mm) | 4 |
| Fork Thickness (mm) | 4 |
| To Suit Fixing Bolt (mm) | 10 |