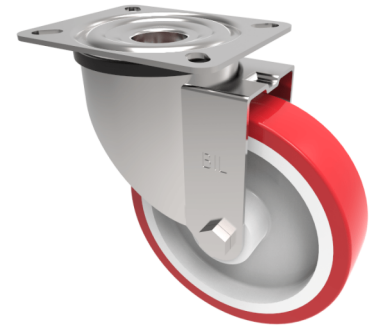


Polyurethane Nylon Plate Swivel Castor 160mm 400kg Load

Product code: SSMM160NPB



Grade 304 Pressed stainless steel swivel castor with a top plate fixing fitted with a red polyurethane white nylon centred wheel with roller bearing. Wheel diameter 160mm, tread width 40mm, overall height 195mm, top plate 140mm x 110mm, hole centres 105mm x 80mm/75mm. Load capacity 400kg.

Diameter (mm)	160
Fixing Option	Plate
Castor Type	Swivel
Height (mm)	195
Wheel Material	Polyurethane on Nylon
Colour / Shore Hardness	Red Polyurethane on Nylon Rim / 96 Shore A
Bearing Type	Roller
Tread (mm)	40
Fork Thickness (mm)	2
To Suit Fixing Bolt (mm)	10
Load Capacity (kg)	400
Temperature Resistance	-20 °C TO +70 °C
Plate Size (mm)	135 x 110
Hole Centres (mm)	105 x 80
Top Plate Thickness (mm)	3
Swivel Radius (mm)	133