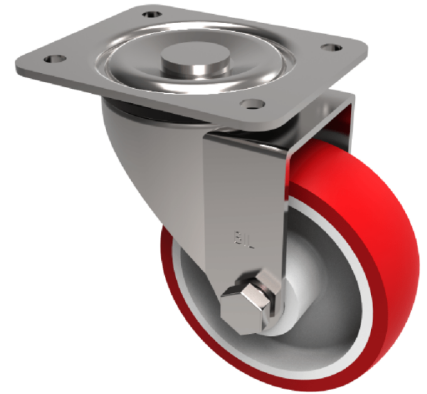


## Polyurethane Nylon Plate Swivel Castor 160mm 450kg Load

**Product code: BZPH160NPB**

Pressed steel swivel castor with a top plate fixing fitted with a red polyurethane tyred on white nylon centre wheel with roller bearings. Wheel diameter 160mm, tread width 40mm, overall height 193mm, top plate 135mm x 110mm, hole centres 105mm x 80/75mm. Load capacity 450kg.



Diameter (mm)	160
Castor Type	Swivel
Fixing Option	Plate
Height (mm)	195
Wheel Material	Polyurethane on Nylon
Colour / Shore Hardness	Red Polyurethane on Nylon Rim / 96 Shore A
Temperature Resistance	-20 °C TO +70 °C
Bearing Type	Roller
Load Capacity (kg)	450
Tread (mm)	40
Swivel Radius (mm)	133
Plate Size (mm)	135 x 110
Hole Centres (mm)	105 x 80/75
Top Plate Thickness (mm)	4
Fork Thickness (mm)	4
To Suit Fixing Bolt (mm)	10