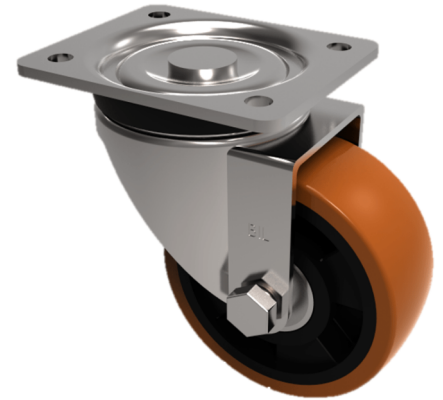


## Polyurethane Nylon Plate Swivel Castor 160mm 700kg Load

**Product code: BZP160XPNB**

Pressed steel swivel castor with a flat plate fixing fitted with a brown polyurethane tyred on black nylon centred wheel with roller bearings. Wheel diameter 160mm, tread width 50mm, overall height 199mm, plate size 135mm x 100mm, hole centres 105mm x 80mm. Load capacity 700kg.



Diameter (mm)	160
Castor Type	Swivel
Fixing Option	Plate
Height (mm)	199
Wheel Material	Polyurethane on Nylon
Colour / Shore Hardness	Brown Polyurethane on Nylon Rim / 96 Shore A
Temperature Resistance	-20 °C TO +60 °C
Bearing Type	Roller
Load Capacity (kg)	700
Tread (mm)	50
Swivel Radius (mm)	135
Plate Size (mm)	135 x 110
Hole Centres (mm)	105 x 80
Top Plate Thickness (mm)	6
Fork Thickness (mm)	4
To Suit Fixing Bolt (mm)	12

### BIL GROUP LTD

Porte Marsh Road, Calne, Wiltshire, SN11 9BW

Registered in England No: 2603821

VAT Reg: GB572705729

