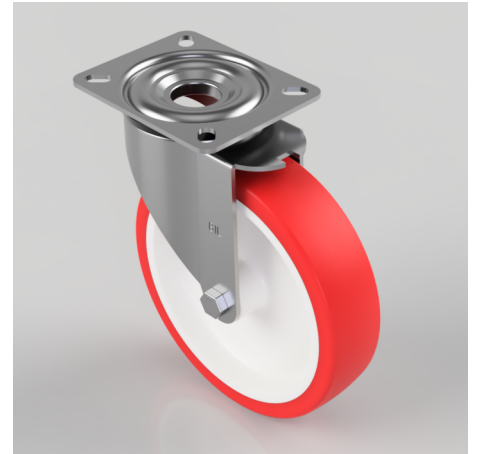


Polyurethane Nylon Plate Swivel Castor 200mm 350kg Load

Product code: BZMM200NP

Pressed steel swivel castor with a top plate fixing fitted with a red polyurethane tyred white nylon centred wheel with a plain bore. Wheel diameter 200mm, tread width 48mm, overall height 235mm, top plate 140mm x 110mm, hole centres 105mm x 80mm. Load capacity 350kg.



Diameter (mm)	200
Castor Type	Swivel
Fixing Option	Plate
Height (mm)	235
Wheel Material	Polyurethane on Nylon
Colour / Shore Hardness	Red Polyurethane on Nylon Rim / 96 Shore A
Temperature Resistance	-20 °C TO +70 °C
Bearing Type	Plain
Load Capacity (kg)	350
Tread (mm)	48
Swivel Radius (mm)	167
Plate Size (mm)	140 x 110
Hole Centres (mm)	105 x 80
Top Plate Thickness (mm)	3
Fork Thickness (mm)	3
To Suit Fixing Bolt (mm)	10

BIL GROUP LTD

Porte Marsh Road, Calne, Wiltshire, SN11 9BW

Registered in England No: 2603821

VAT Reg: GB572705729

