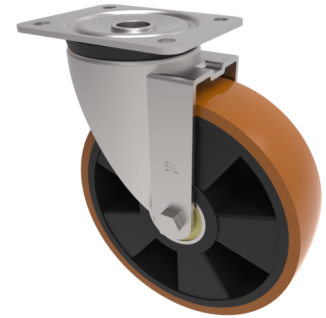


Polyurethane Nylon Plate Swivel Castor 200mm 500kg Load

Product code: BZPH200XPBJ



Pressed steel swivel castor with a top plate fixing fitted with a brown polyurethane tyred black nylon centred wheel with ball bearings. Wheel diameter 200mm, tread width 57mm, overall height 238mm, top plate 135mm x 115mm, hole centres 105mm x 80/75mm. Load capacity 500kg.

Diameter (mm)	200
Castor Type	Swivel
Fixing Option	Plate
Height (mm)	238
Wheel Material	Polyurethane on Nylon
Colour / Shore Hardness	Brown Polyurethane on Nylon Rim / 96 Shore A
Temperature Resistance	-20 °C TO +60 °C
Bearing Type	Ball
Load Capacity (kg)	500
Tread (mm)	57
Swivel Radius (mm)	153
Plate Size (mm)	135 x 110
Hole Centres (mm)	105 x 80/75
Top Plate Thickness (mm)	5
Fork Thickness (mm)	5
To Suit Fixing Bolt (mm)	10