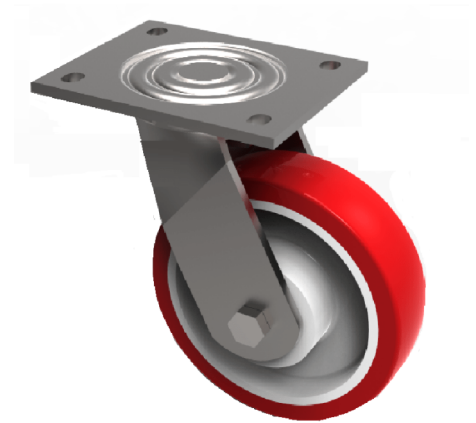


## Polyurethane Nylon Plate Swivel Castor 200mm 600kg Load

**Product code: BZJ200PNBJ**

Fabricated swivel castor with a top plate fixing fitted with a brown polyurethane tyred on white nylon wheel with ball bearings. Wheel diameter 200mm, tread width 50mm, overall height 240mm, plate size 135mm x 110mm, hole centres 105mm x 80mm. Load capacity 600kg.



Diameter (mm)	200
Fixing Option	Plate
Castor Type	Swivel
Bearing Type	Ball
Height (mm)	240
Plate Size (mm)	135 x 110
Hole Centres (mm)	105 x 80
To Suit Fixing Bolt (mm)	10
Wheel Material	Polyurethane on Nylon
Colour / Shore Hardness	Brown Polyurethane on Nylon Rim / 96 Shore A
Temperature Resistance	-20 °C TO +60 °C
Top Plate Thickness (mm)	5.5
Fork Thickness (mm)	5.5
Swivel Radius (mm)	154
Load Capacity (kg)	600
Tread (mm)	50

### BIL GROUP LTD

Porte Marsh Road, Calne, Wiltshire, SN11 9BW

Registered in England No: 2603821

VAT Reg: GB572705729

