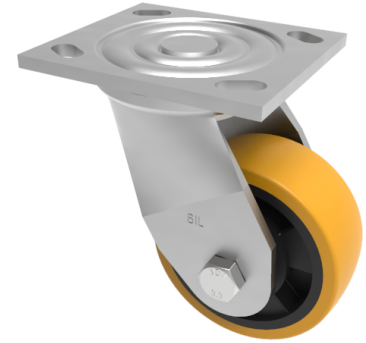


## Polyurethane Nylon Plate Swivel Castor 200mm 600kg Load

**Product code: BZJ200XPNB/USA**



Fabricated swivel castor with a top plate fixing fitted with a brown polyurethane on black nylon centred wheel with roller bearings. Wheel diameter 200mm, tread width 57mm, overall height 240mm, top plate 115mm x 102mm, hole centres 92mm x 67mm and 76mm x 76mm. Load capacity 600kg.

|                          |  |
|--------------------------|--|
| Diameter (mm)            | 200  |
| Fixing Option            | Plate  |
| Castor Type              | Swivel                                       |
| Bearing Type             | Roller                                       |
| Height (mm)              | 240  |
| Plate Size (mm)          | 115 x 102                                    |
| Hole Centres (mm)        | 76/92 x 76/67                                |
| To Suit Fixing Bolt (mm) | 10   |
| Wheel Material           | Polyurethane on Nylon                        |
| Colour / Shore Hardness  | Brown Polyurethane on Nylon Rim / 96 Shore A |
| Temperature Resistance   | -20 °C TO +80 °C                             |
| Top Plate Thickness (mm) | 5.5  |
| Fork Thickness (mm)      | 5.5  |
| Swivel Radius (mm)       | 154  |
| Load Capacity (kg)       | 600  |
| Tread (mm)               | 57   |