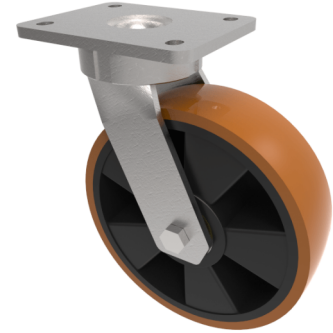


## Polyurethane Nylon Plate Swivel Castor 200mm 800kg Load

**Product code: BZKL200XPBJ**

fabricated swivel castor with a top plate fixing fitted with a brown polyurethane tyred wheel on a black nylon centred wheel with ball bearings. Wheel diameter 200mm, tread width 57mm, overall height 245mm, top plate 138mm x 110mm, hole centres 105mm x 80/75mm. Load capacity 800kg. NB the BIL catalogue is incorrect overall height is 245mm.



Diameter (mm)	200
Fixing Option	Plate
Castor Type	Swivel
Bearing Type	Ball
Height (mm)	245
Plate Size (mm)	138 x 110
Hole Centres (mm)	105 x 80
To Suit Fixing Bolt (mm)	10
Wheel Material	Polyurethane on Nylon
Colour / Shore Hardness	Brown Polyurethane on Nylon Rim / 96 Shore A
Temperature Resistance	-20 °C TO +80 °C
Top Plate Thickness (mm)	7.5
Fork Thickness (mm)	6
Swivel Radius (mm)	152
Load Capacity (kg)	800
Tread (mm)	57

### BIL GROUP LTD

Porte Marsh Road, Calne, Wiltshire, SN11 9BW

Registered in England No: 2603821

VAT Reg: GB572705729

