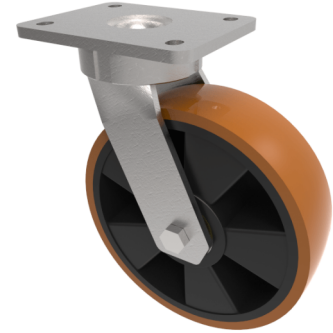


Polyurethane Nylon Plate Swivel Castor 200mm 800kg Load

Product code: BZKL200XPNB

Fabricated swivel castor with a top plate fixing fitted with a brown polyurethane tyred black nylon centred wheel with roller bearing and a total lock brake. Wheel diameter 200mm, tread width 57mm, overall height 245mm, top plate 138mm x 110mm, hole centres 105mm x 80/75mm. Load capacity 800kg



Diameter (mm)	200
Fixing Option	Plate
Castor Type	Swivel
Bearing Type	Roller
Height (mm)	245
Plate Size (mm)	138 x 110
Hole Centres (mm)	105 x 80
To Suit Fixing Bolt (mm)	10
Wheel Material	Polyurethane on Nylon
Colour / Shore Hardness	Brown Polyurethane on Nylon Rim / 96 Shore A
Temperature Resistance	-20 °C TO +80 °C
Top Plate Thickness (mm)	7.5
Fork Thickness (mm)	6
Swivel Radius (mm)	152
Load Capacity (kg)	800
Tread (mm)	57

BIL GROUP LTD

Porte Marsh Road, Calne, Wiltshire, SN11 9BW

Registered in England No: 2603821

VAT Reg: GB572705729

