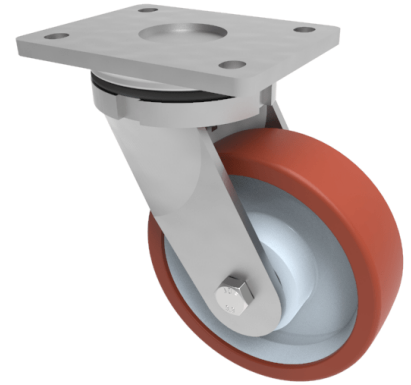


Polyurethane Nylon Plate Swivel Castor 250mm 750kg Load

Product code: BZSAB250PNBJ

Fabricated zinc plated swivel castor with plate fixing fitted with a brown polyurethane tyred nylon centred centred wheel with ball bearings. Wheel diameter 250mm, tread width 50mm, overall height 250mm, plate size 138mm x 110mm, hole centres 105mm x 80mm/75mm. Load capacity 750kg



Diameter (mm)	250
Fixing Option	Plate
Castor Type	Swivel
Bearing Type	Ball
Height (mm)	300
Plate Size (mm)	138 x 110
Hole Centres (mm)	105 x 80
To Suit Fixing Bolt (mm)	10
Wheel Material	Polyurethane on Nylon
Colour / Shore Hardness	Brown Polyurethane on Nylon Rim / 96 Shore A
Temperature Resistance	-20 °C TO +60 °C
Top Plate Thickness (mm)	8
Fork Thickness (mm)	6
Swivel Radius (mm)	200
Load Capacity (kg)	750
Tread (mm)	50