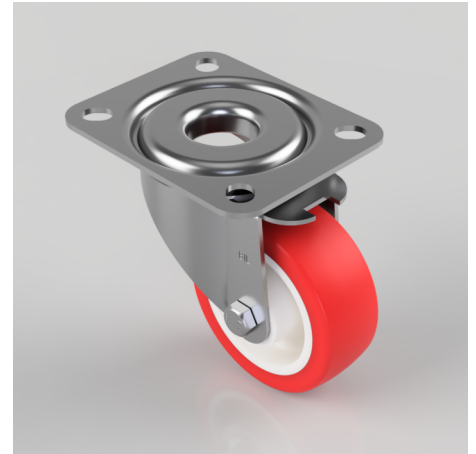


## Polyurethane Nylon Plate Swivel Castor 80mm 150kg Load

**Product code: BZMM80NPB**

Pressed steel swivel castor with top plate fixing fitted with red polyurethane tyre on white nylon centred wheel with roller bearing. Wheel diameter 80mm, tread width 30mm, overall height 105mm, top plate 105mm x 85mm, hole centres 80mm x 60mm. Load capacity 150kg.



|                          |  |
|--------------------------|--|
| Diameter (mm)            | 80   |
| Castor Type              | Swivel                                     |
| Fixing Option            | Plate                                      |
| Height (mm)              | 105  |
| Wheel Material           | Polyurethane on Nylon                      |
| Colour / Shore Hardness  | Red Polyurethane on Nylon Rim / 96 Shore A |
| Temperature Resistance   | -20 °C TO +70 °C                           |
| Bearing Type             | Roller                                     |
| Load Capacity (kg)       | 150  |
| Tread (mm)               | 30   |
| Swivel Radius (mm)       | 74   |
| Plate Size (mm)          | 105 X 85                                   |
| Hole Centres (mm)        | 80 X 60                                    |
| Top Plate Thickness (mm) | 2.5  |
| Fork Thickness (mm)      | 2  |
| To Suit Fixing Bolt (mm) | 8  |