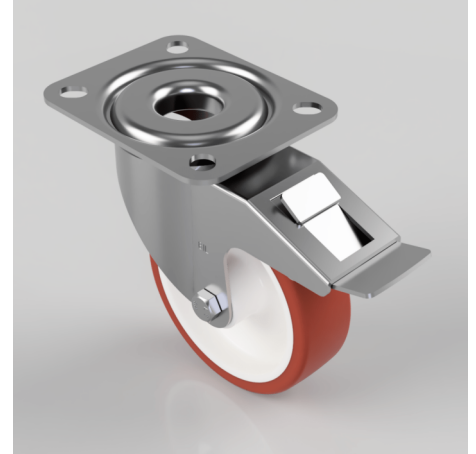


## Polyurethane Nylon Plate Swivel Castor Brake 100mm 150kg Load

**Product code: BZMM100PNSWB**

Pressed steel swivel castor with a top plate fixing fitted with a brown polyurethane on white nylon centred wheel with a plain bore and total lock brake. Wheel diameter 100mm, tread width 30mm, overall height 128mm, top plate 105mm x 85mm, hole centres 80mm x 60mm. Load capacity 150kg.



|                          |  |
|--------------------------|--|
| Diameter (mm)            | 100  |
| Castor Type              | Swivel with Total Lock Brake                 |
| Fixing Option            | Plate  |
| Height (mm)              | 128  |
| Wheel Material           | Polyurethane on Nylon                        |
| Colour / Shore Hardness  | Brown Polyurethane on Nylon Rim / 96 Shore A |
| Temperature Resistance   | -20 °C TO +60 °C                             |
| Bearing Type             | Plain  |
| Load Capacity (kg)       | 150  |
| Tread (mm)               | 30   |
| Swivel Radius (mm)       | 88   |
| Plate Size (mm)          | 105 X 85                                     |
| Hole Centres (mm)        | 80 X 60                                      |
| Top Plate Thickness (mm) | 2  |
| Fork Thickness (mm)      | 2  |
| To Suit Fixing Bolt (mm) | 8  |

### BIL GROUP LTD

Porte Marsh Road, Calne, Wiltshire, SN11 9BW

Registered in England No: 2603821

VAT Reg: GB572705729

