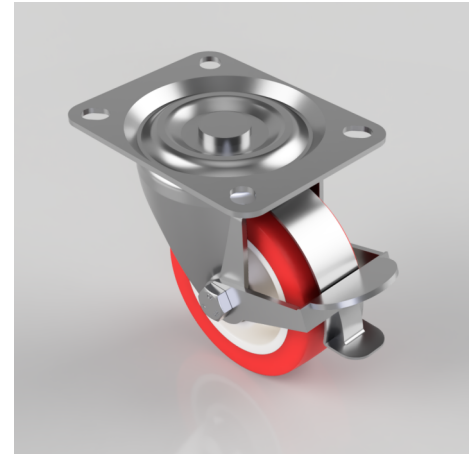


Polyurethane Nylon Plate Swivel Castor Brake 100mm 250kg Load

Product code: BZH100NPBJBRLP

Pressed steel swivel castor with a top plate fitted with a red polyurethane tyre on white nylon centred wheel with ball bearings and wheel brake, wheel diameter 100mm, tread width 40mm, overall height 127mm, top plate 128mm x 102mm, bolt centres 105mm x 80mm or 100mm x 76mm with a load capacity of 250kgs. (Catalogue SKU BZH100NPBJLPBR)



Diameter (mm)	100
Castor Type	Swivel with Wheel Brake
Fixing Option	Plate
Height (mm)	128
Wheel Material	Polyurethane on Nylon
Colour / Shore Hardness	Red Polyurethane on Nylon Rim / 96 Shore A
Temperature Resistance	-20 °C TO +70 °C
Bearing Type	Ball
Load Capacity (kg)	250
Tread (mm)	40
Swivel Radius (mm)	106
Plate Size (mm)	128 x 102
Hole Centres (mm)	105 x 80/76
Top Plate Thickness (mm)	3
Fork Thickness (mm)	3
To Suit Fixing Bolt (mm)	10

BIL GROUP LTD

Porte Marsh Road, Calne, Wiltshire, SN11 9BW

Registered in England No: 2603821

VAT Reg: GB572705729

