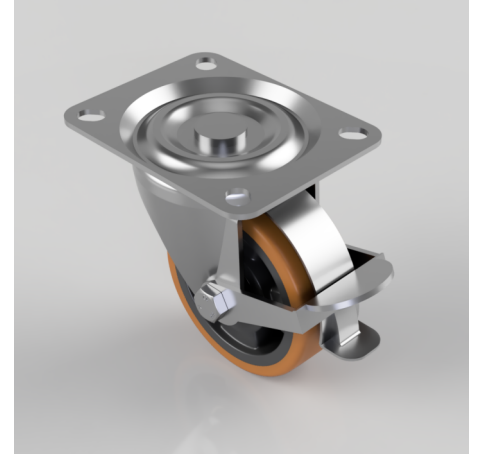


## Polyurethane Nylon Plate Swivel Castor Brake 100mm 250kg Load

**Product code: BZH100XPNBJBRLP**

Pressed steel swivel castor with a top plate fixing fitted with a brown polyurethane tyre on black nylon centred wheel with ball bearings and wheel brake. Wheel diameter 100mm, tread width 40mm, overall height 127mm, top plate 128mm x 102mm, hole centres 105mm x 80mm or 100mm x 76mm. Load capacity 250kg (Catalogue SKU BZH100XPNBJLPBR)



Diameter (mm)	100
Castor Type	Swivel with Wheel Brake
Fixing Option	Plate
Height (mm)	128
Wheel Material	Polyurethane on Nylon
Colour / Shore Hardness	Brown Polyurethane on Nylon Rim / 96 Shore A
Temperature Resistance	-20 °C TO +60 °C
Bearing Type	Ball
Load Capacity (kg)	250
Tread (mm)	40
Swivel Radius (mm)	106
Plate Size (mm)	128 x 102
Hole Centres (mm)	105 x 80/76
Top Plate Thickness (mm)	3
Fork Thickness (mm)	3
To Suit Fixing Bolt (mm)	10