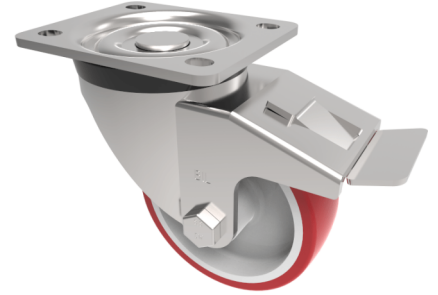


Polyurethane Nylon Plate Swivel Castor Brake 100mm 250kg Load

Product code: BZH100NPSWB



Pressed steel swivel castor with a top plate fixing fitted with a red polyurethane wheel on a white nylon centre with a plain bore and total lock brake. Wheel diameter 100mm, tread width 33mm, overall height 128mm, top plate 105mm x 86mm, hole centres 80mm x 60mm. Load capacity 250kg.

Diameter (mm)	100
Castor Type	Swivel with Total Lock Brake
Fixing Option	Plate
Height (mm)	128
Wheel Material	Polyurethane on Nylon
Colour / Shore Hardness	Red Polyurethane on Nylon Rim / 96 Shore A
Temperature Resistance	-20 °C TO +70 °C
Bearing Type	Plain
Load Capacity (kg)	250
Tread (mm)	33
Swivel Radius (mm)	90
Plate Size (mm)	105 x 86
Hole Centres (mm)	80 X 60
Top Plate Thickness (mm)	4
Fork Thickness (mm)	4
To Suit Fixing Bolt (mm)	8