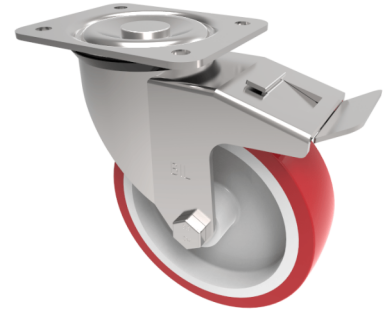


Polyurethane Nylon Plate Swivel Castor Brake 100mm 250kg Load

Product code: BZEH100NPSWBLP



Pressed steel swivel castor with a top plate fixing fitted with a red polyurethane tyred white nylon centred wheel with a plain bore and a total lock brake. Wheel diameter 100mm, tread width 34mm, overall height 129mm, plate size 135mm x 110mm, hole centres 105mm x 80mm or 116mm x 93.5mm. Load capacity 250kg.

Diameter (mm)	100
Castor Type	Swivel with Total Lock Brake
Fixing Option	Plate
Height (mm)	128
Wheel Material	Polyurethane on Nylon
Colour / Shore Hardness	Red Polyurethane on Nylon Rim / 96 Shore A
Temperature Resistance	-20 °C TO +70 °C
Bearing Type	Plain
Load Capacity (kg)	250
Tread (mm)	33
Swivel Radius (mm)	116
Plate Size (mm)	135 x 110
Hole Centres (mm)	105/116 x 80/64
Top Plate Thickness (mm)	3
Fork Thickness (mm)	3
To Suit Fixing Bolt (mm)	10