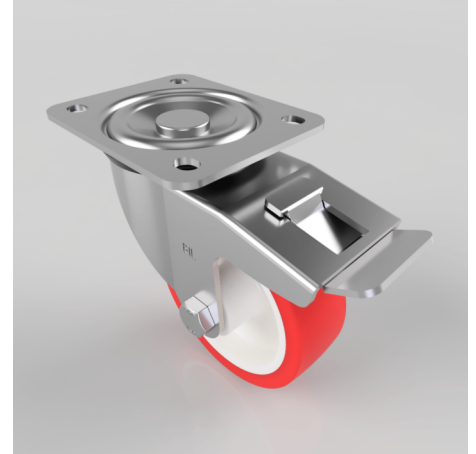


Polyurethane Nylon Plate Swivel Castor Brake 100mm 250kg Load

Product code: SSEH100NPSWB

Grade 304 Pressed stainless steel swivel castor with a top plate fixing fitted with a red polyurethane tyred white nylon centred wheel with a plain bore and a total lock brake. Wheel diameter 100mm, tread width 33mm, overall height 130mm, top plate 105mm x 86mm, hole centres 80mm x 60mm. Load capacity 250kg



Diameter (mm)	100
Fixing Option	Plate
Castor Type	Swivel with Total Lock Brake
Height (mm)	128
Wheel Material	Polyurethane on Nylon
Colour / Shore Hardness	Red Polyurethane on Nylon Rim / 96 Shore A
Bearing Type	Plain
Tread (mm)	33
Fork Thickness (mm)	3
To Suit Fixing Bolt (mm)	8
Load Capacity (kg)	250
Temperature Resistance	-20 °C TO +70 °C
Plate Size (mm)	105 x 86
Hole Centres (mm)	80 X 60
Top Plate Thickness (mm)	3
Swivel Radius (mm)	115

BIL GROUP LTD

Porte Marsh Road, Calne, Wiltshire, SN11 9BW

Registered in England No: 2603821

VAT Reg: GB572705729

