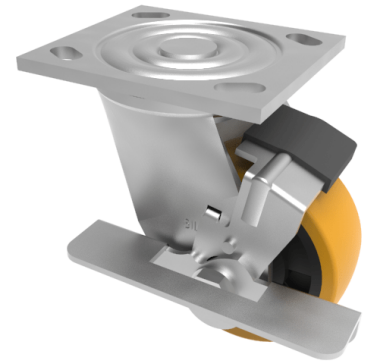


## Polyurethane Nylon Plate Swivel Castor Brake 100mm 300kg Load

**Product code: BZJ100XPNBGBK/USA**

Fabricated swivel castor with a top plate fixing fitted with a brown polyurethane tyred black nylon centred wheel with ball bearings and side fitting wheel brake. Wheel diameter 100mm, tread width 40mm, overall height 143mm, top plate 115mm x 102mm, hole centres 92mm x 67mm and 76mm x 76mm. Load capacity 300kg.



Diameter (mm)	100
Fixing Option	Plate
Castor Type	Swivel with Wheel Brake
Bearing Type	Ball
Height (mm)	143
Plate Size (mm)	115 x 102
Hole Centres (mm)	76/92 x 76/67
To Suit Fixing Bolt (mm)	10
Wheel Material	Polyurethane on Nylon
Colour / Shore Hardness	Brown Polyurethane on Nylon Rim / 96 Shore A
Temperature Resistance	-20 °C TO +80 °C
Top Plate Thickness (mm)	5.5
Fork Thickness (mm)	5.5
Swivel Radius (mm)	126
Load Capacity (kg)	300
Tread (mm)	40