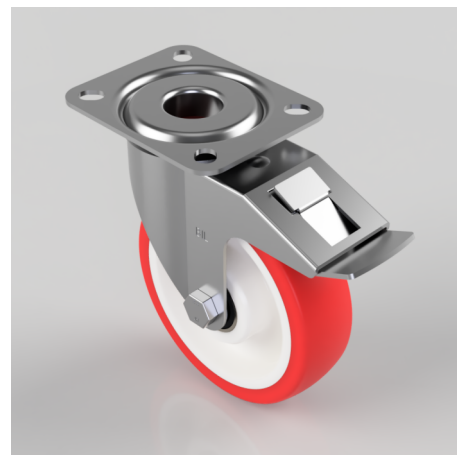


Polyurethane Nylon Plate Swivel Castor Brake 125mm 200kg Load

Product code: BZMM125NPBJSWB

Pressed steel swivel castor with a top plate fitted with a red polyurethane on white nylon centred wheel with double ball bearings and total lock brake, 125mm wheel diameter, 35mm tread width, 155mm overall height, 105 x 85 top plate, 80 x 60mm bolt holes, with a load capacity of 200kgs.



Diameter (mm)	125
Castor Type	Swivel with Total Lock Brake
Fixing Option	Plate
Height (mm)	155
Wheel Material	Polyurethane on Nylon
Colour / Shore Hardness	Red Polyurethane on Nylon Rim / 96 Shore A
Temperature Resistance	-20 °C TO +70 °C
Bearing Type	Ball
Load Capacity (kg)	200
Tread (mm)	35
Swivel Radius (mm)	123
Plate Size (mm)	105 X 85
Hole Centres (mm)	80 X 60
Top Plate Thickness (mm)	2.5
Fork Thickness (mm)	2
To Suit Fixing Bolt (mm)	8

BIL GROUP LTD

Porte Marsh Road, Calne, Wiltshire, SN11 9BW

Registered in England No: 2603821

VAT Reg: GB572705729

