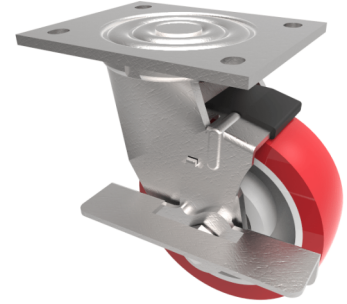


Polyurethane Nylon Plate Swivel Castor Brake 125mm 350kg Load

Product code: BZJ125NPBJBK



Fabricated swivel castor with a flat plate fixing fitted with a red polyurethane tyre on white nylon centred wheel with ball bearings and side fitting wheel brake. Wheel diameter 125mm, tread width 40mm, overall height 165mm, plate size 135mm x 110mm, hole centres 105mm x 80mm. Load capacity 350kg. NB due to the fact these are reinforced nylon the white centre is slightly off white.

Diameter (mm)	125
Fixing Option	Plate
Castor Type	Swivel with Wheel Brake
Bearing Type	Ball
Height (mm)	165
Plate Size (mm)	135 x 110
Hole Centres (mm)	105 x 80
To Suit Fixing Bolt (mm)	10
Wheel Material	Polyurethane on Nylon
Colour / Shore Hardness	Red Polyurethane on Nylon Rim / 96 Shore A
Temperature Resistance	-20 °C TO +70 °C
Top Plate Thickness (mm)	5.5
Fork Thickness (mm)	5.5
Swivel Radius (mm)	126
Load Capacity (kg)	350
Tread (mm)	40

BIL GROUP LTD

Porte Marsh Road, Calne, Wiltshire, SN11 9BW

Registered in England No: 2603821

VAT Reg: GB572705729

