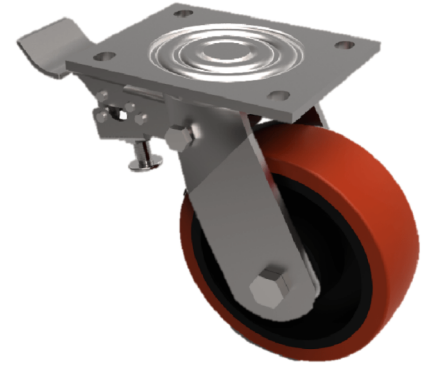


Polyurethane Nylon Plate Swivel Castor Brake 125mm 400kg Load

Product code: BZJ125XPNBJSWB

Fabricated swivel castor with a flat plate fixing fitted with a brown polyurethane tyre on black nylon centred wheel with ball bearings with a total lock brake. Wheel diameter 125mm, tread width 45mm, overall height 165mm, plate size 135mm x 110mm, hole centres 105mm x 80mm. Load capacity 400kg.



Diameter (mm)	125
Fixing Option	Plate
Castor Type	Swivel with Total Lock Brake
Bearing Type	Ball
Height (mm)	165
Plate Size (mm)	135 x 110
Hole Centres (mm)	105 x 80
To Suit Fixing Bolt (mm)	10
Wheel Material	Polyurethane on Nylon
Colour / Shore Hardness	Brown Polyurethane on Nylon Rim / 96 Shore A
Temperature Resistance	-20 °C TO +80 °C
Top Plate Thickness (mm)	5.5
Fork Thickness (mm)	5.5
Swivel Radius (mm)	132
Load Capacity (kg)	400
Tread (mm)	45

BIL GROUP LTD

Porte Marsh Road, Calne, Wiltshire, SN11 9BW

Registered in England No: 2603821

VAT Reg: GB572705729

