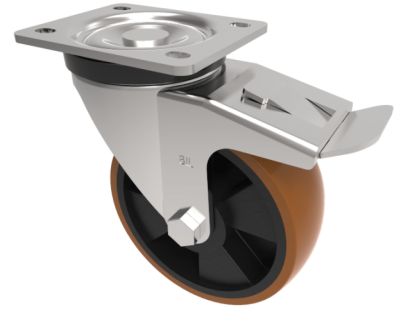


Polyurethane Nylon Plate Swivel Castor Brake 125mm 400kg Load

Product code: BZH125XPNBSWB

Pressed steel swivel castor with a top plate fixing fitted with a brown polyurethane tyre on black nylon centred wheel with roller bearings with a total lock brake, Wheel diameter 125mm, tread width 45mm, overall height 155mm, top plate 105mm x 86mm, hole centres 80mm x 60mm. Load capacity 400kg



Diameter (mm)	125
Castor Type	Swivel with Total Lock Brake
Fixing Option	Plate
Height (mm)	155
Wheel Material	Polyurethane on Nylon
Colour / Shore Hardness	Brown Polyurethane on Nylon Rim / 96 Shore A
Temperature Resistance	-20 °C TO +60 °C
Bearing Type	Roller
Load Capacity (kg)	400
Tread (mm)	45
Swivel Radius (mm)	104
Plate Size (mm)	105 x 86
Hole Centres (mm)	80 X 60
Top Plate Thickness (mm)	4
Fork Thickness (mm)	4
To Suit Fixing Bolt (mm)	8