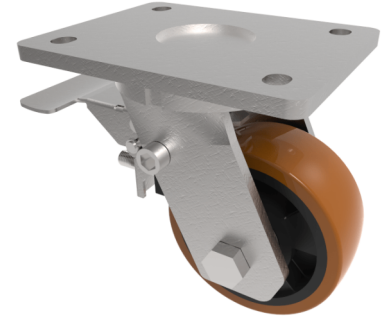


Polyurethane Nylon Plate Swivel Castor Brake 125mm 400kg Load

Product code: BZKL125XPNBJSWB



Fabricated swivel castor with a top plate fixing fitted with a brown polyurethane on black nylon wheel with ball bearings and a total lock brake. Wheel diameter 125mm, tread width 45mm, overall height 165mm, top plate 138mm x 110mm, hole centres 105mm x 80/75mm. Load capacity 400kg

| | |
|--------------------------|--|
| Diameter (mm) | 125 |
| Fixing Option | Plate |
| Castor Type | Swivel with Total Lock Brake |
| Bearing Type | Ball |
| Height (mm) | 165 |
| Plate Size (mm) | 138 x 110 |
| Hole Centres (mm) | 105 x 80 |
| To Suit Fixing Bolt (mm) | 10 |
| Wheel Material | Polyurethane on Nylon |
| Colour / Shore Hardness | Brown Polyurethane on Nylon Rim / 96 Shore A |
| Temperature Resistance | -20 °C TO +80 °C |
| Top Plate Thickness (mm) | 7.5 |
| Fork Thickness (mm) | 6 |
| Swivel Radius (mm) | 100 |
| Load Capacity (kg) | 400 |
| Tread (mm) | 45 |