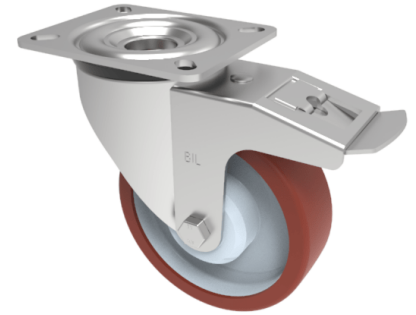


## Polyurethane Nylon Plate Swivel Castor Brake 150mm 350kg Load

**Product code: BZMM150PNSWB**



Pressed steel swivel castor with a top plate fixing fitted with a brown polyurethane tyre white nylon centred wheel with a plain bore and total lock brake. Wheel diameter 150mm, tread width 45mm, overall height 190mm, top plate 140mm x 110mm, hole centres 105mm x 80mm/75mm. Load capacity 350kg.

Diameter (mm)	150
Castor Type	Swivel with Total Lock Brake
Fixing Option	Plate
Height (mm)	190
Wheel Material	Polyurethane on Nylon
Colour / Shore Hardness	Brown Polyurethane on Nylon Rim / 96 Shore A
Temperature Resistance	-20 °C TO +60 °C
Bearing Type	Plain
Load Capacity (kg)	350
Tread (mm)	45
Swivel Radius (mm)	168
Plate Size (mm)	135 x 110
Hole Centres (mm)	105 x 80/75
Top Plate Thickness (mm)	3
Fork Thickness (mm)	3
To Suit Fixing Bolt (mm)	10

### BIL GROUP LTD

Porte Marsh Road, Calne, Wiltshire, SN11 9BW

Registered in England No: 2603821

VAT Reg: GB572705729

