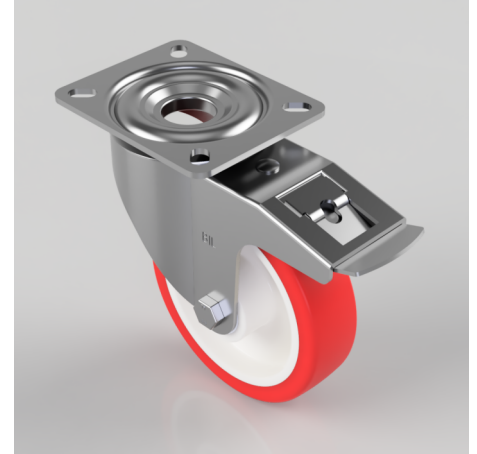


Polyurethane Nylon Plate Swivel Castor Brake 150mm 400kg Load

Product code: BZMM150NPBSWB

Pressed steel swivel castor with a top plate fixing fitted with a red polyurethane tyred nylon centred wheel with roller bearings and a total lock brake. Wheel diameter 150mm, tread width 40mm, overall height 190mm, top plate 135mm x 110mm, hole centres 105mm x 80mm. Load capacity 400kg.



Diameter (mm)	150
Castor Type	Swivel with Total Lock Brake
Fixing Option	Plate
Height (mm)	190
Wheel Material	Polyurethane on Nylon
Colour / Shore Hardness	Red Polyurethane on Nylon Rim / 96 Shore A
Temperature Resistance	-20 °C TO +70 °C
Bearing Type	Roller
Load Capacity (kg)	400
Tread (mm)	40
Swivel Radius (mm)	167
Plate Size (mm)	135 x 110
Hole Centres (mm)	105 x 80
Top Plate Thickness (mm)	4
Fork Thickness (mm)	3
To Suit Fixing Bolt (mm)	10

BIL GROUP LTD

Porte Marsh Road, Calne, Wiltshire, SN11 9BW

Registered in England No: 2603821

VAT Reg: GB572705729

