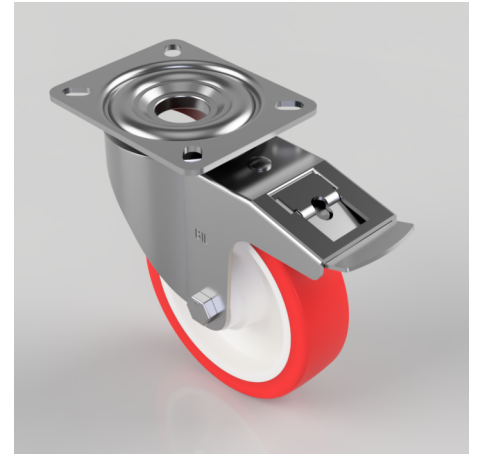


## Polyurethane Nylon Plate Swivel Castor Brake 150mm 400kg Load

**Product code: BZMM150NPSWB**

Pressed steel swivel castor with a top plate fixing fitted with a red polyurethane tyred nylon centred wheel with plain bores and a total lock brake. Wheel diameter 150mm, tread width 40mm, overall height 190mm, top plate 140mm x 110mm, hole centres 105mm x 80/75mm. Load capacity 400kg.



Diameter (mm)	150
Castor Type	Swivel with Total Lock Brake
Fixing Option	Plate
Height (mm)	190
Wheel Material	Polyurethane on Nylon
Colour / Shore Hardness	Red Polyurethane on Nylon Rim / 96 Shore A
Temperature Resistance	-20 °C TO +70 °C
Bearing Type	Plain
Load Capacity (kg)	400
Tread (mm)	40
Swivel Radius (mm)	167
Plate Size (mm)	140 x 110
Hole Centres (mm)	105 x 80/75
Top Plate Thickness (mm)	3
Fork Thickness (mm)	3
To Suit Fixing Bolt (mm)	10