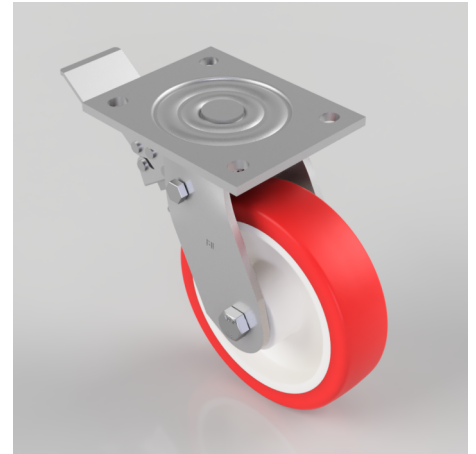


## Polyurethane Nylon Plate Swivel Castor Brake 150mm 500kg Load

**Product code: BZJ150NPBSWB**

Fabricated swivel castor with a top plate fixing fitted with a red polyurethane tyre on white nylon centred wheel with a roller bearing with a total lock brake. Wheel diameter 150mm, tread width 40mm, overall height 190mm, plate size 135mm x 110mm, hole centres 105mm x 80mm. Load capacity 500kg.



Diameter (mm)	150
Fixing Option	Plate
Castor Type	Swivel with Total Lock Brake
Bearing Type	Roller
Height (mm)	190
Plate Size (mm)	135 x 110
Hole Centres (mm)	105 x 80
To Suit Fixing Bolt (mm)	10
Wheel Material	Polyurethane on Nylon
Colour / Shore Hardness	Red Polyurethane on Nylon Rim / 96 Shore A
Temperature Resistance	-20 °C TO +70 °C
Top Plate Thickness (mm)	5.5
Fork Thickness (mm)	5.5
Swivel Radius (mm)	132
Load Capacity (kg)	500
Tread (mm)	40

### BIL GROUP LTD

Porte Marsh Road, Calne, Wiltshire, SN11 9BW

Registered in England No: 2603821

VAT Reg: GB572705729

