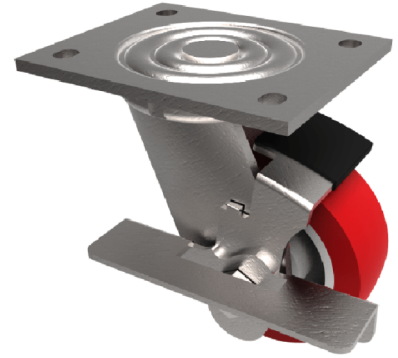


Polyurethane Nylon Plate Swivel Castor Brake 150mm 500kg Load

Product code: BZJ150NPBJBK/USA

Fabricated swivel castor with a top plate fixing fitted with a red polyurethane tyred white nylon centred wheel with ball bearings and side fitting wheel brake . Wheel diameter 150mm, tread width 40mm, overall height 190mm, top plate 115mm x 102mm, hole centres 92mm x 67mm and 76mm x 76mm. Load capacity 500kg.



| | |
|--------------------------|--------------------------------------------|
| Diameter (mm) | 150 |
| Fixing Option | Plate |
| Castor Type | Swivel with Wheel Brake |
| Bearing Type | Ball |
| Height (mm) | 190 |
| Plate Size (mm) | 115 x 102 |
| Hole Centres (mm) | 76/92 x 76/67 |
| To Suit Fixing Bolt (mm) | 10 |
| Wheel Material | Polyurethane on Nylon |
| Colour / Shore Hardness | Red Polyurethane on Nylon Rim / 96 Shore A |
| Temperature Resistance | -20 °C TO +70 °C |
| Top Plate Thickness (mm) | 5.5 |
| Fork Thickness (mm) | 5.5 |
| Swivel Radius (mm) | 132 |
| Load Capacity (kg) | 500 |
| Tread (mm) | 40 |

BIL GROUP LTD

Porte Marsh Road, Calne, Wiltshire, SN11 9BW

Registered in England No: 2603821

VAT Reg: GB572705729