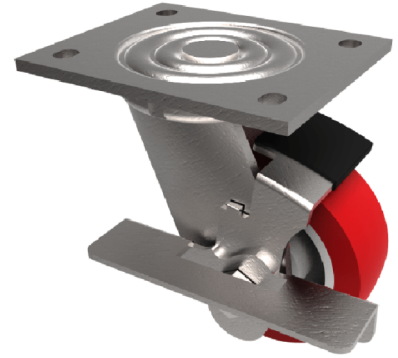


Polyurethane Nylon Plate Swivel Castor Brake 150mm 500kg Load

Product code: BZEJ150NPBBK

Fabricated swivel castor with a top plate fixing fitted with a red polyurethane tyred white nylon centred wheel with a roller bearing and side fitting wheel brake. Wheel diameter 150mm, tread width 40mm, overall height 190mm, top plate 135mm x 110mm, hole centres 105mm x 80mm. Load capacity 500kg.



Diameter (mm)	150
Fixing Option	Plate
Castor Type	Swivel with Wheel Brake
Bearing Type	Roller
Height (mm)	190
Plate Size (mm)	135 x 110
Hole Centres (mm)	105 x 80
To Suit Fixing Bolt (mm)	12
Wheel Material	Polyurethane on Nylon
Colour / Shore Hardness	Red Polyurethane on Nylon Rim / 96 Shore A
Temperature Resistance	-20 °C TO +70 °C
Top Plate Thickness (mm)	5.5
Fork Thickness (mm)	5.5
Swivel Radius (mm)	122
Load Capacity (kg)	500
Tread (mm)	40