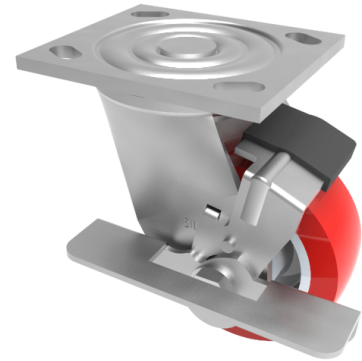


## Polyurethane Nylon Plate Swivel Castor Brake 150mm 500kg Load

**Product code: BZJ150NPBBK/USA**

Fabricated swivel castor with a top plate fixing fitted with a red polyurethane tyred white nylon centred wheel with a roller bearing and side fitting wheel brake. Wheel diameter 150mm, tread width 40mm, overall height 190mm, top plate 115mm x 102mm, hole centres 92mm x 67mm and 76mm x 76mm. Load capacity 500kg.



Diameter (mm)	150
Fixing Option	Plate
Castor Type	Swivel with Wheel Brake
Bearing Type	Roller
Height (mm)	190
Plate Size (mm)	115 x 102
Hole Centres (mm)	76/92 x 76/67
To Suit Fixing Bolt (mm)	10
Wheel Material	Polyurethane on Nylon
Colour / Shore Hardness	Red Polyurethane on Nylon Rim / 96 Shore A
Temperature Resistance	-20 °C TO +70 °C
Top Plate Thickness (mm)	5.5
Fork Thickness (mm)	5.5
Swivel Radius (mm)	132
Load Capacity (kg)	500
Tread (mm)	40