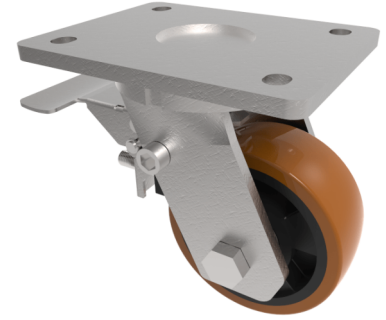


Polyurethane Nylon Plate Swivel Castor Brake 150mm 600kg Load

Product code: BZKL150XPNBJSWB



Fabricated swivel castor with a top plate fixing fitted with a brown polyurethane tyre nylon centred wheel with ball bearings with total lock brake. Wheel diameter 150mm, tread width 50mm, overall height 195mm, top plate 138mm x 110mm, hole centres 105mm x 80/75mm. Load capacity 600kg.

Diameter (mm)	150
Fixing Option	Plate
Castor Type	Swivel with Total Lock Brake
Bearing Type	Ball
Height (mm)	195
Plate Size (mm)	138 x 110
Hole Centres (mm)	105 x 80
To Suit Fixing Bolt (mm)	10
Wheel Material	Polyurethane on Nylon
Colour / Shore Hardness	Brown Polyurethane on Nylon Rim / 96 Shore A
Temperature Resistance	-20 °C TO +80 °C
Top Plate Thickness (mm)	7.5
Fork Thickness (mm)	6
Swivel Radius (mm)	150
Load Capacity (kg)	600
Tread (mm)	50

BIL GROUP LTD

Porte Marsh Road, Calne, Wiltshire, SN11 9BW

Registered in England No: 2603821

VAT Reg: GB572705729

