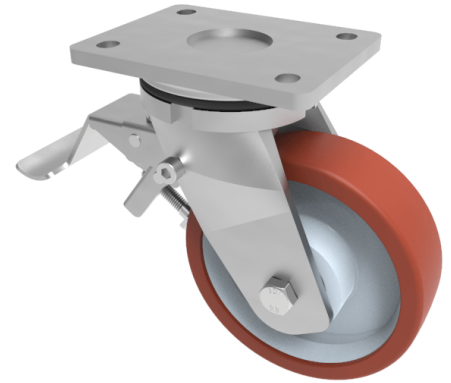


Polyurethane Nylon Plate Swivel Castor Brake 150mm 600kg Load

Product code: BZSAB150PNBSWB

Fabricated zinc plated swivel castor with plate fixing fitted with a brown polyurethane tyre white nylon centred wheel with roller bearings and total lock brake. Wheel diameter 150mm, tread width 45mm, overall height 200mm, plate size 138mm x 110mm, hole centres 105mm x 80mm/75mm. Load capacity 600kg,



Diameter (mm)	150
Fixing Option	Plate
Castor Type	Swivel with Total Lock Brake
Bearing Type	Roller
Height (mm)	200
Plate Size (mm)	138 x 110
Hole Centres (mm)	105 x 80
To Suit Fixing Bolt (mm)	10
Wheel Material	Polyurethane on Nylon
Colour / Shore Hardness	Brown Polyurethane on Nylon Rim / 96 Shore A
Temperature Resistance	-20 °C TO +60 °C
Top Plate Thickness (mm)	8
Fork Thickness (mm)	6
Swivel Radius (mm)	145
Load Capacity (kg)	600
Tread (mm)	45