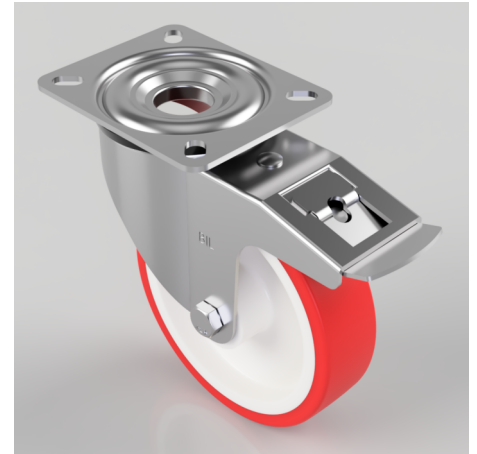


## Polyurethane Nylon Plate Swivel Castor Brake 160mm 400kg Load

**Product code: SSMM160NPBSWB**

Grade 304 Pressed stainless steel swivel castor with a top plate fixing fitted with a red polyurethane white nylon centred wheel with roller bearing and total lock brake. Wheel diameter 160mm, tread width 42mm, overall height 195mm, top plate 135mm x 110mm, hole centres 105mm x 80mm. Load capacity 400kg.



Diameter (mm)	160
Fixing Option	Plate
Castor Type	Swivel with Total Lock Brake
Height (mm)	195
Wheel Material	Polyurethane on Nylon
Colour / Shore Hardness	Red Polyurethane on Nylon Rim / 96 Shore A
Bearing Type	Roller
Tread (mm)	42
Fork Thickness (mm)	2.5
To Suit Fixing Bolt (mm)	10
Load Capacity (kg)	400
Temperature Resistance	-20 °C TO +70 °C
Plate Size (mm)	135 x 110
Hole Centres (mm)	105 x 80
Top Plate Thickness (mm)	3.5
Swivel Radius (mm)	167

### BIL GROUP LTD

Porte Marsh Road, Calne, Wiltshire, SN11 9BW

Registered in England No: 2603821

VAT Reg: GB572705729

