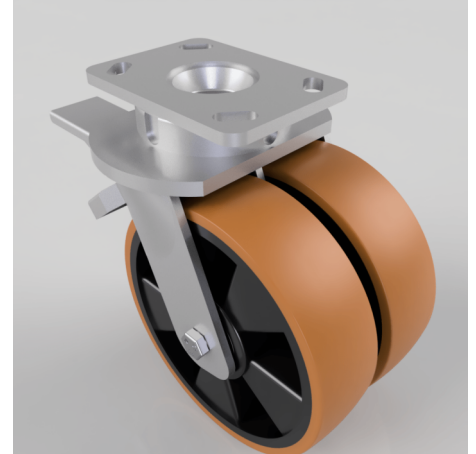


Polyurethane Nylon Plate Swivel Castor Brake 200mm 1500kg Load

Product code: 2BZK200XPNBDBR

Twin-wheeled fabricated swivel castor with a top plate fixing and 4 way directional lock fitted with 2 x brown polyurethane tyred black nylon centred ball bearing wheels with double wheel brake. Wheel diameter 200mm, tread width 57mm, overall height 200mm, top plate 150mm x 110mm, hole centers 105mm x 80mm or 121mm x 59mm. Load capacity 1500kg.



| | |
|--------------------------|--|
| Diameter (mm) | 200 |
| Fixing Option | Plate |
| Castor Type | Swivel with Wheel Brake |
| Bearing Type | Ball |
| Plate Size (mm) | 150 x 110 |
| Hole Centres (mm) | 105/121 x 80/59 |
| Height (mm) | 250 |
| Swivel Radius (mm) | 170 |
| To Suit Fixing Bolt (mm) | 12 |
| Wheel Material | Polyurethane on Nylon |
| Colour / Shore Hardness | Brown Polyurethane on Nylon Rim / 96 Shore A |
| Temperature Resistance | "-20 °C TO +80 °C |
| Tread (mm) | 2 x 57 |
| Load Capacity (kg) | 1500 |
| Top Plate Thickness (mm) | 7.5 |
| Fork Thickness (mm) | 6 |

BIL GROUP LTD

Porte Marsh Road, Calne, Wiltshire, SN11 9BW

Registered in England No: 2603821

VAT Reg: GB572705729

