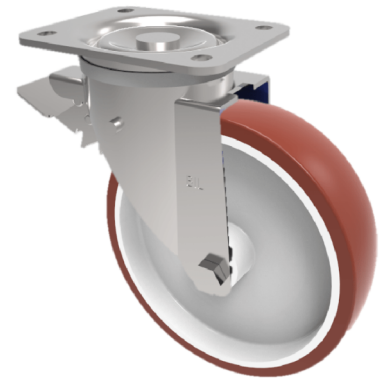


Polyurethane Nylon Plate Swivel Castor Brake 200mm 350kg Load

Product code: BZWB200PNBSWB



Pressed steel swivel flat plate castor with a top plate fixing fitted with brown polyurethane tyred tyre on white nylon centre wheel with roller bearings and a total lock brake. Wheel diameter 200mm, tread width 50mm, overall height 238mm, plate size 135mm x 110mm, hole centres 105mm x 80/75mm, load capacity 350kg.

Diameter (mm)	200
Castor Type	Swivel with Total Lock Brake
Fixing Option	Plate
Height (mm)	238
Wheel Material	Polyurethane on Nylon
Colour / Shore Hardness	Brown Polyurethane on Nylon Rim / 96 Shore A
Temperature Resistance	-20 °C TO +60 °C
Bearing Type	Roller
Load Capacity (kg)	350
Tread (mm)	50
Swivel Radius (mm)	157
Plate Size (mm)	135 x 110
Hole Centres (mm)	105 x 80/75
Top Plate Thickness (mm)	4
Fork Thickness (mm)	3
Brake Type	Leading Brake
To Suit Fixing Bolt (mm)	10