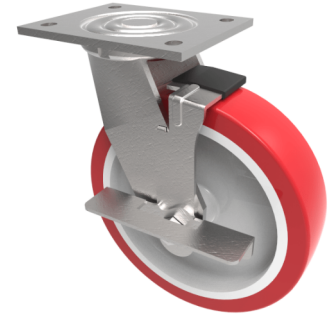


Polyurethane Nylon Plate Swivel Castor Brake 200mm 600kg Load

Product code: BZJ200NPBK



Fabricated swivel castor with a flat plate fixing fitted with a red polyurethane tyre on white nylon centred wheel with plain bore and a side fitting wheel brake. Wheel diameter 200mm, tread width 48mm, overall height 240mm, plate size 135mm x 110mm, hole centres 105mm x 80mm. Load capacity 600kg.

| | |
|--------------------------|--|
| Diameter (mm) | 200 |
| Fixing Option | Plate |
| Castor Type | Swivel with Wheel Brake |
| Bearing Type | Plain |
| Height (mm) | 240 |
| Plate Size (mm) | 135 x 110 |
| Hole Centres (mm) | 105 x 80 |
| To Suit Fixing Bolt (mm) | 10 |
| Wheel Material | Polyurethane on Nylon |
| Colour / Shore Hardness | Red Polyurethane on Nylon Rim / 96 Shore A |
| Temperature Resistance | -20 °C TO +70 °C |
| Top Plate Thickness (mm) | 5.5 |
| Fork Thickness (mm) | 5.5 |
| Swivel Radius (mm) | 154 |
| Load Capacity (kg) | 600 |
| Tread (mm) | 48 |